

BAG 1

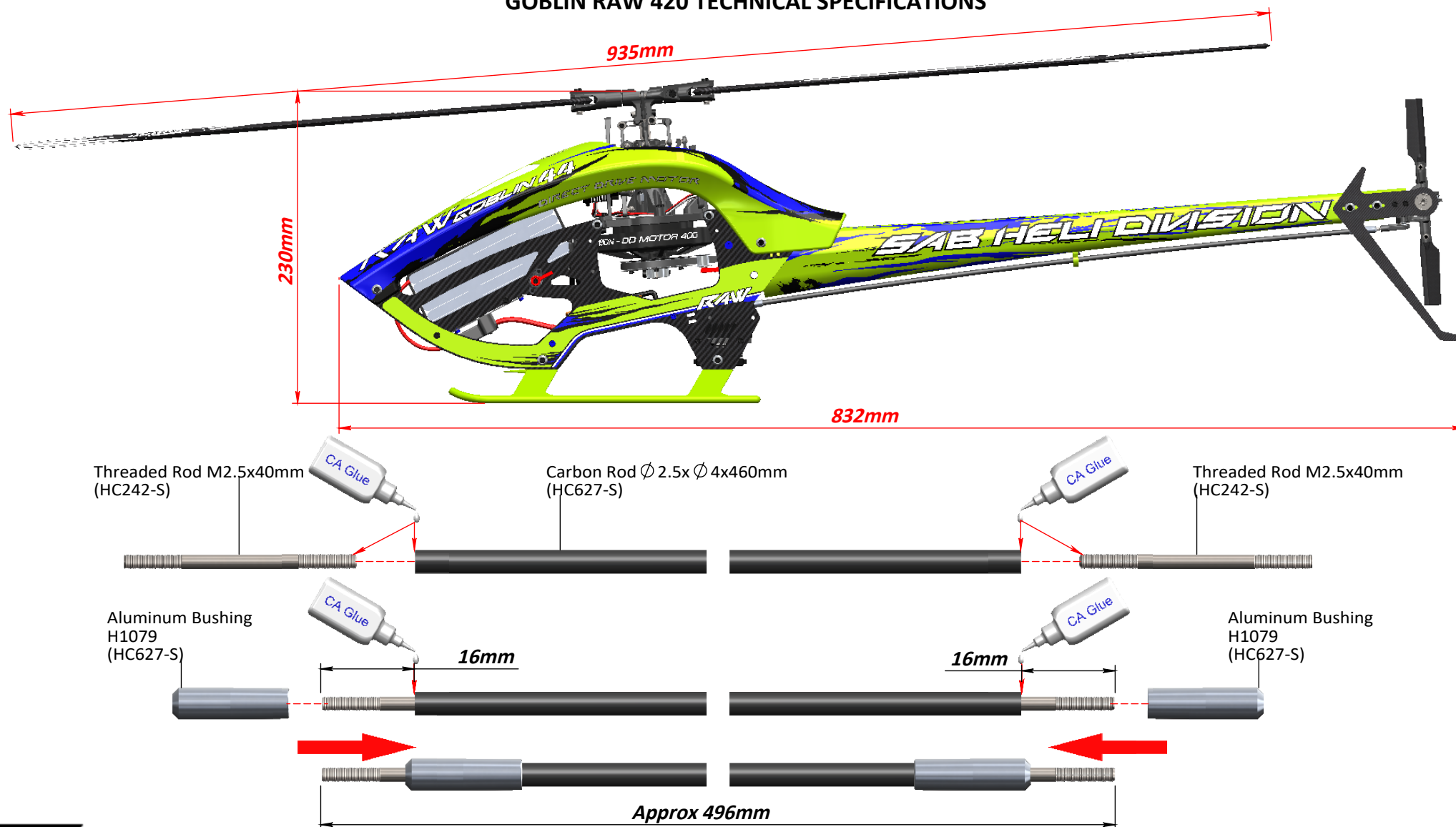
This kit is designed to convert the boom of the Raw 420 from a traditional aluminum round boom to a carbon fiber molded style boom.

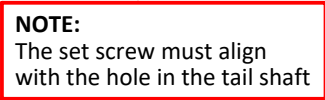
This conversion kit is designed for use on the SAB Raw 420 [SG421] model only.

Please read this user manual carefully together with the kit manual, both manuals contain instructions for the proper assembly of this product.

Refer to our web site www.goblin-helicopter.com for updates and other important information. Thank you.

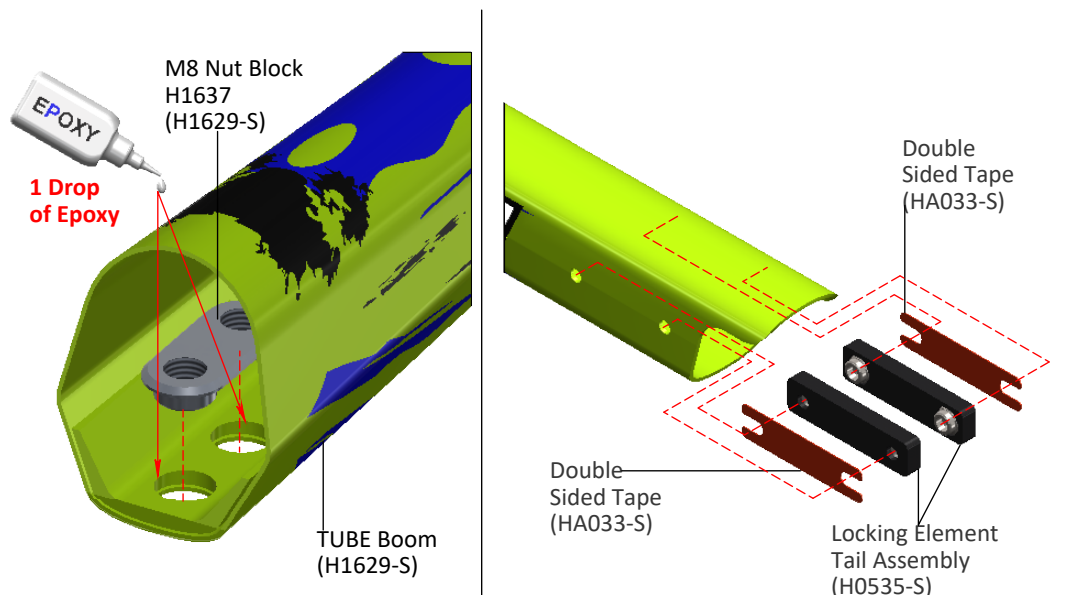
GOBLIN RAW 420 TECHNICAL SPECIFICATIONS



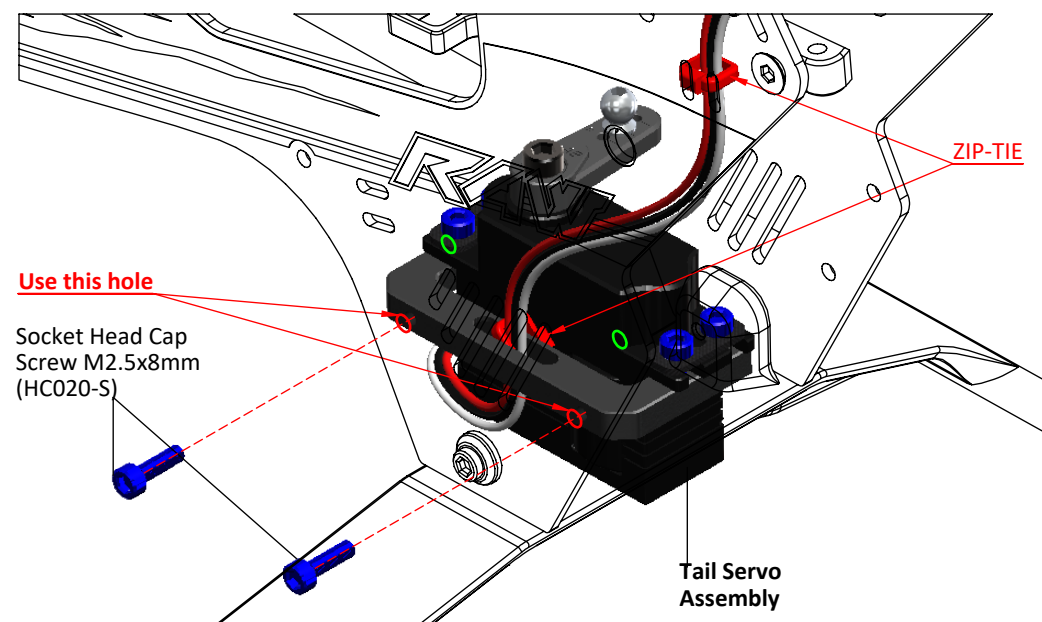
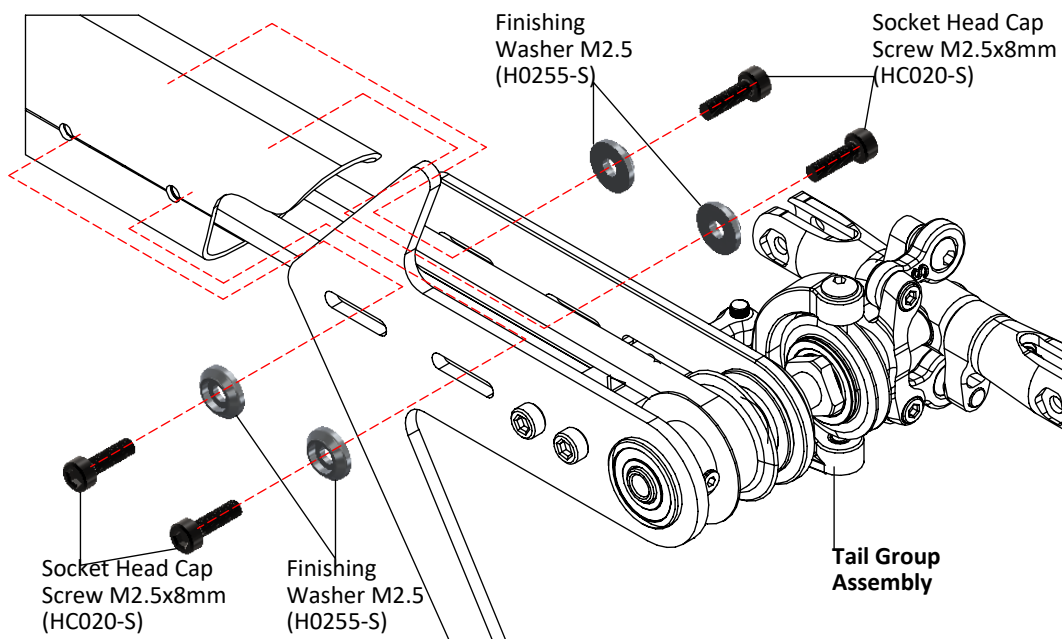
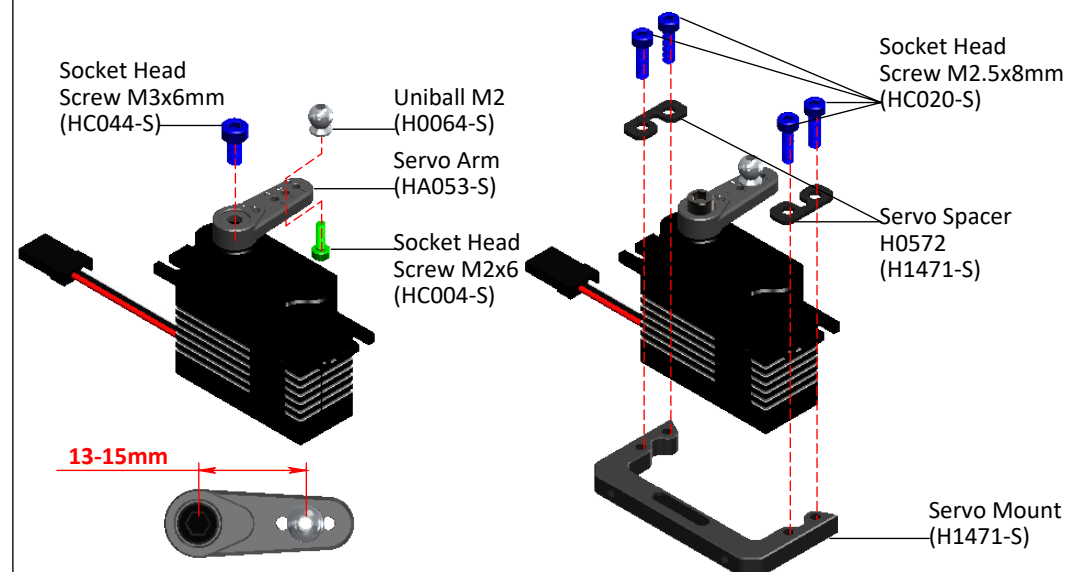


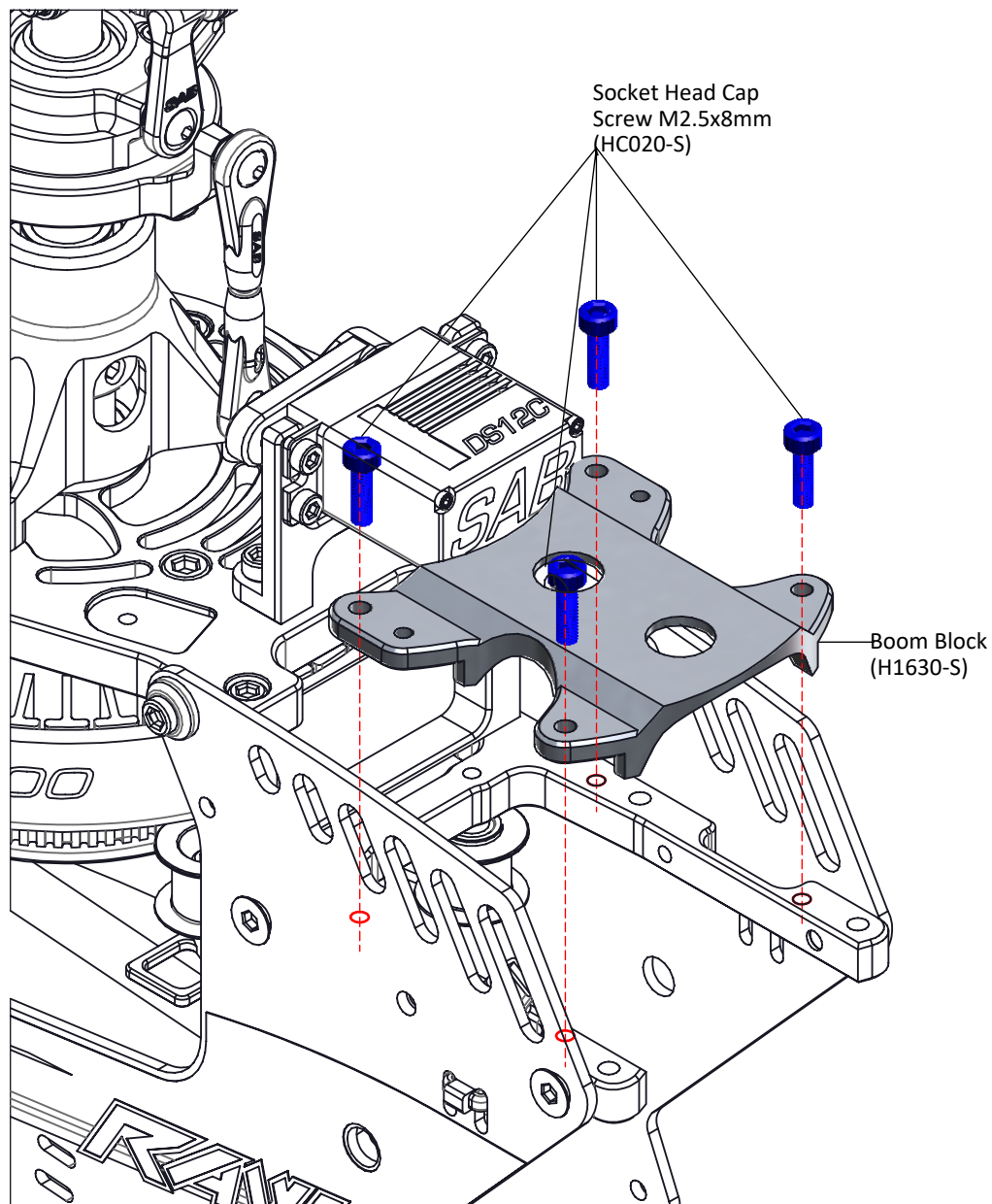
BAG 4

TAIL BOOM ASSEMBLY



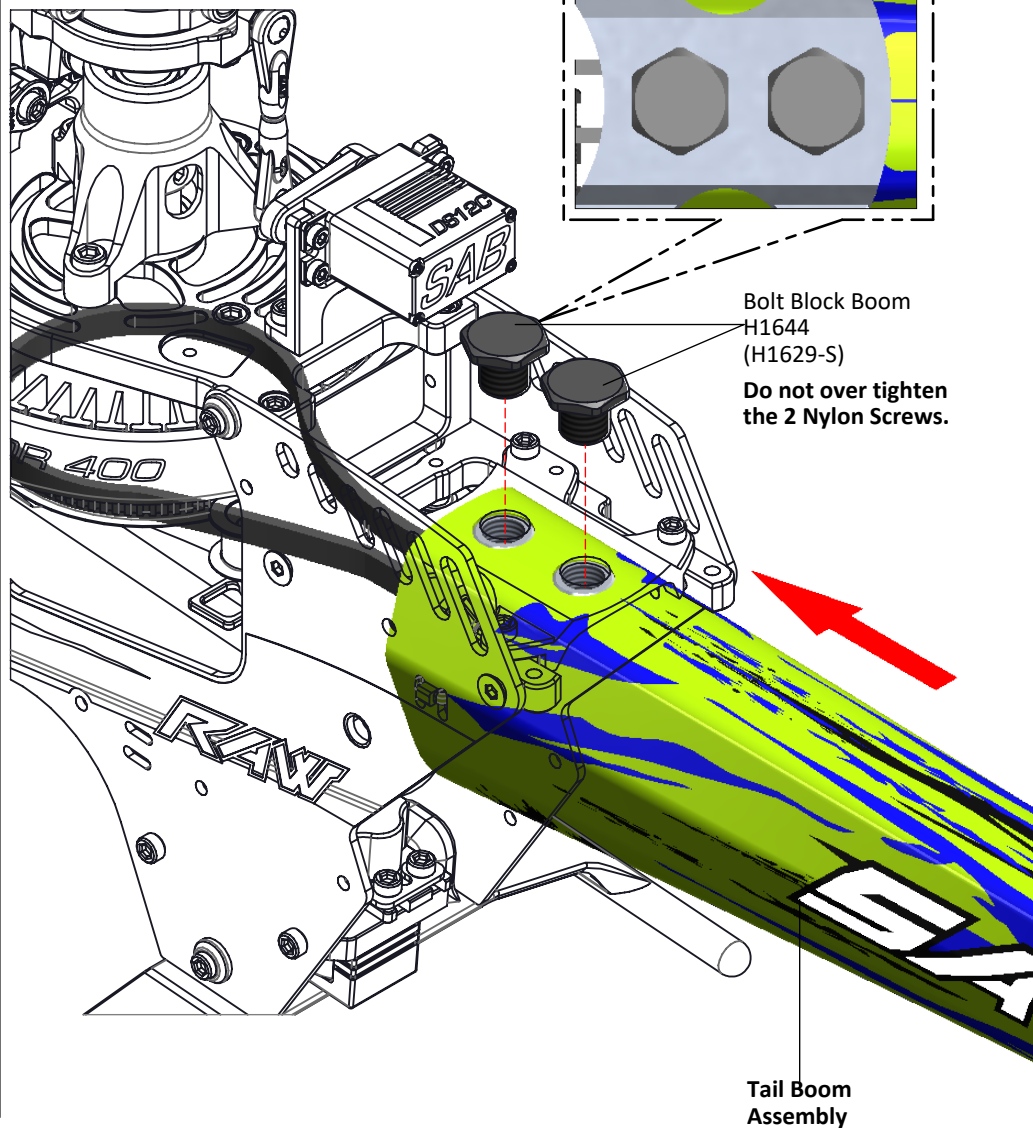
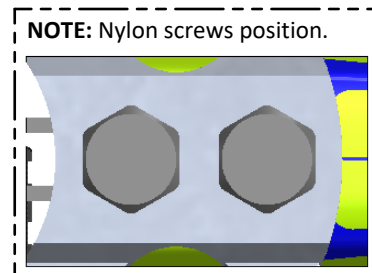
TAIL SERVO ASSEMBLY

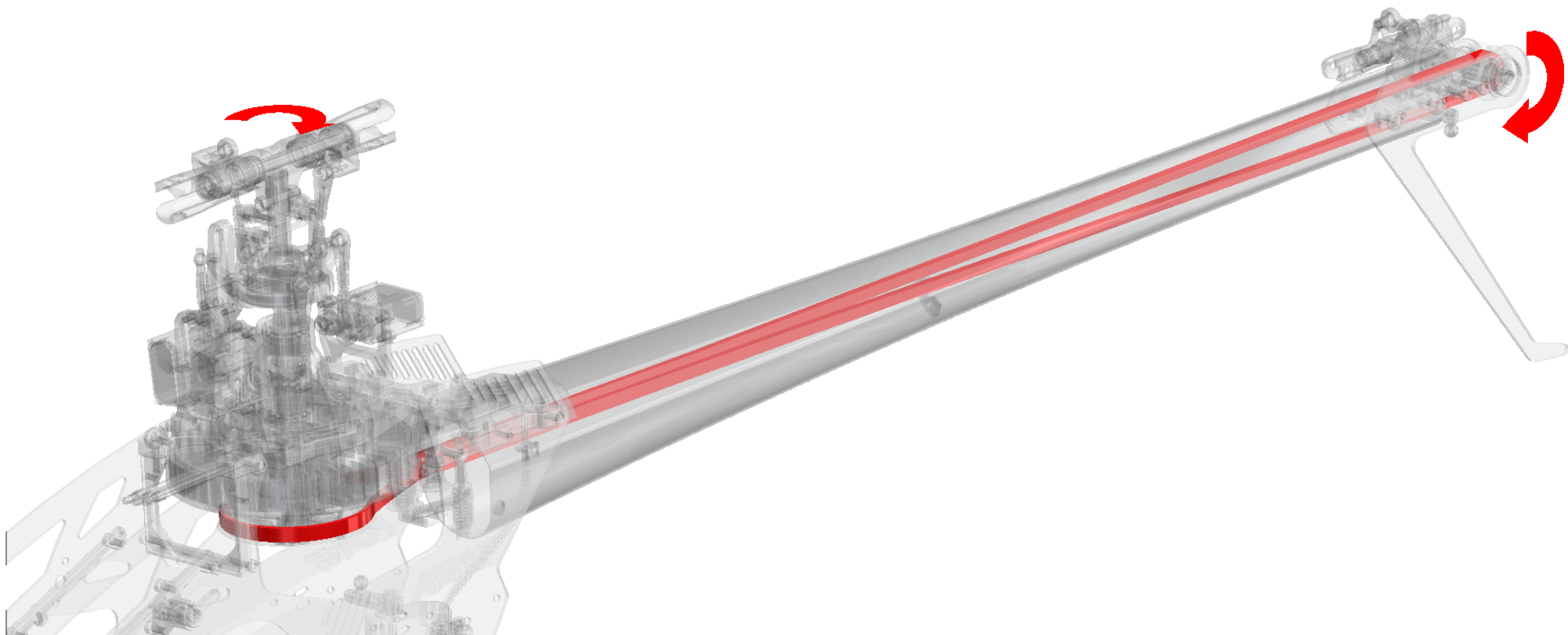




TAIL BOOM ASSEMBLY

- * Insert the boom. This operation is easier fitting into the main frame.
- * Tighten the two M8 nut with HA016 special tool supplied.





TAIL BELT TENSION

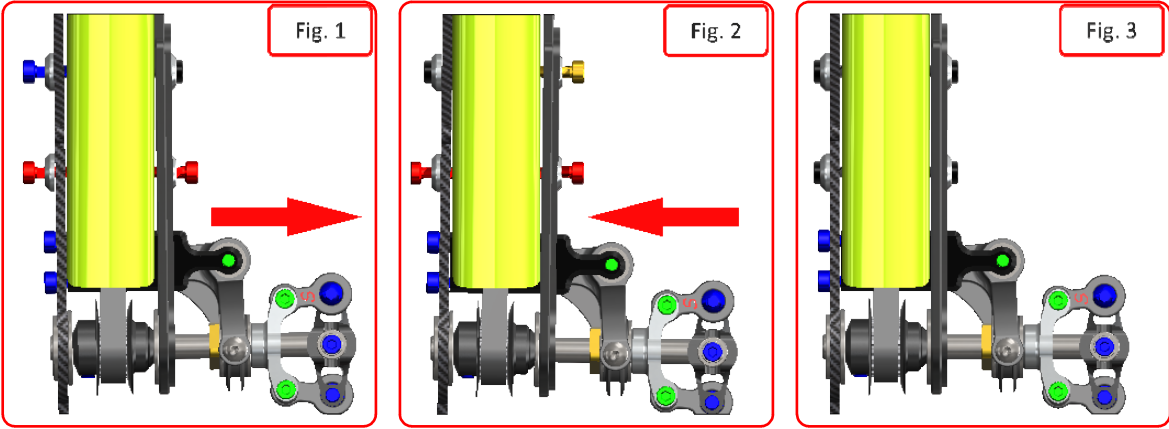
To provide the correct tail belt tension, you can use the "zig-zag" method.

Figure 1: Loosen the **2 RED** and the **BLUE** screws and push the tail side plate in the direction of the red arrow, tighten the **BLUE** screw while pushing.

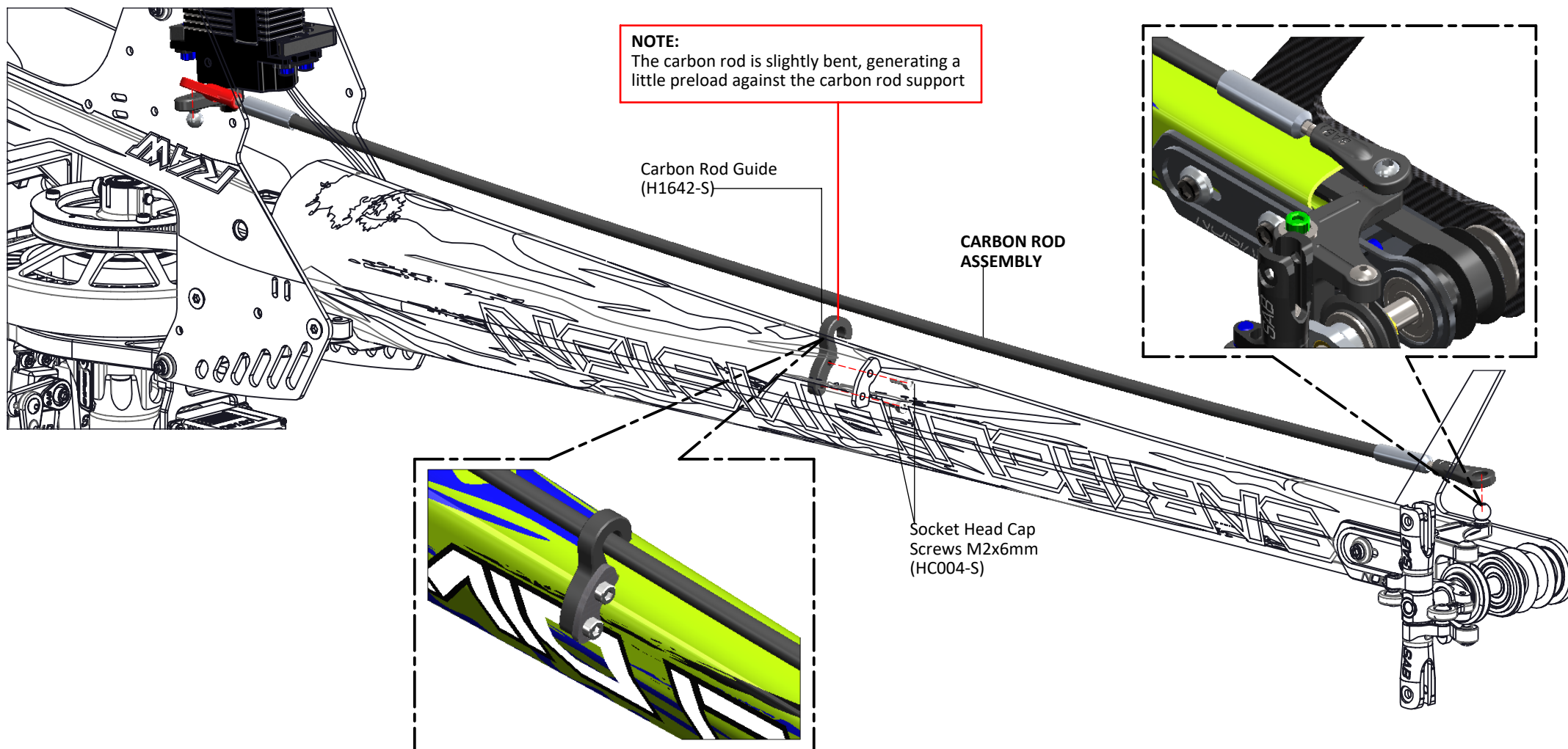
Figure 2: Loosen the **2 RED** and the **YELLOW** screws and push the tail side plate in the direction of the red arrow, tighten the **YELLOW** screw while pushing.

You can continue to do this back and forth until the tail belt is tight enough. We recommend higher tension for hard 3D while you can have less tension for sport flying. When setting the belt tension, tighten all screws making sure the tail shaft is perpendicular to the boom.

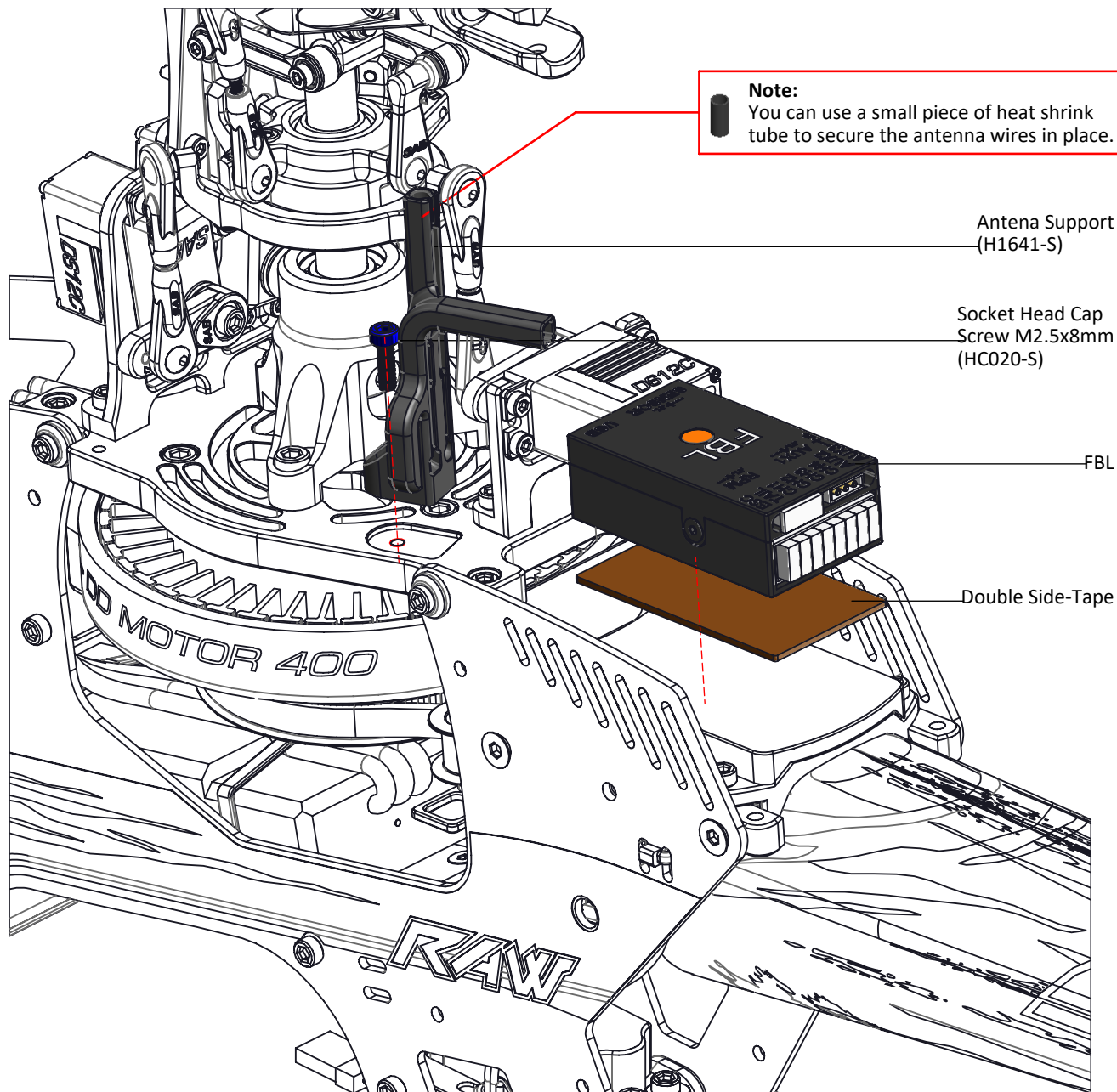
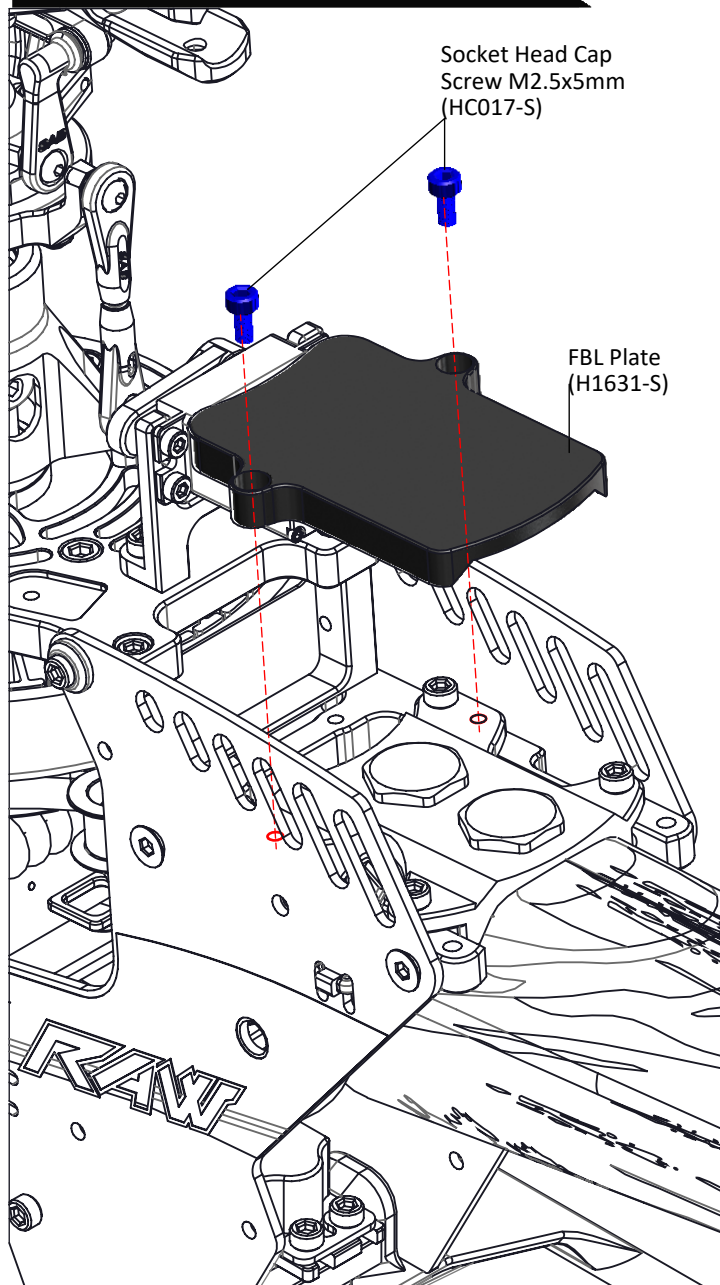
Figure 3: The tail output shaft must be perpendicular to the boom.



⚠ Before installing the plastic links onto the threaded rod, be sure that you have waited for at least 12 hours and glue is fully cured.

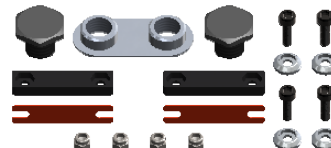


BAG 7



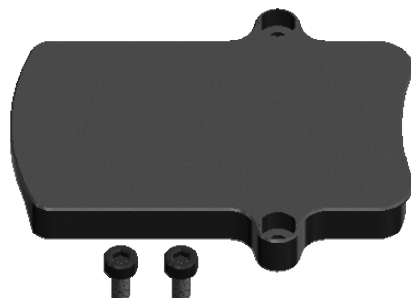
Carbon Boom [H1629-S]

- 1 x Carbon Boom.
- 1 x M8 Block.
- 2 x Botl M8.
- 2 x Tail Element Block.
- 2 x Double Side Tape.
- 4 x Nylon Nut M2.5.
- 4 x Finishing Washer M2.5.
- 4 x Socket Head Cap Screw M2.5x8mm.



FBL Plate [H1631-S]

- 1 x FBL Plate.
- 2 x Socket Head Cap Screw M2.5x5mm.



Tail Side Plate [H1632-S]

- 1 x Tail Side Plate.
- 1 x Flanged Bearing $\phi 5 \times \phi 13 \times 4 \text{mm}$.



Tail Fin [H1633-S]

- 1 x Tail Fin.
- 1 x Tail Fin Sticker.
- 1 x Flanged Bearing $\phi 5 \times \phi 13 \times 4 \text{mm}$.



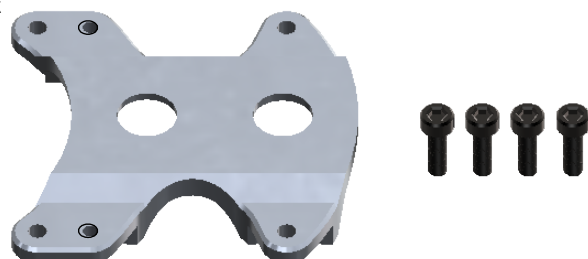
Cross Tail Case [H1634-S]

- 1 x Cross Tail Case.
- 2 x Socket Head Cap Screw M2.5x6mm.



Carbon Boom Block [H1635-S]

- 1 x Carbon Boom Block.
- 4 x Socket Head Cap Screw M2.5x8mm.



Carbon Rod Guide [H1642-S]

- 1 x Carbon Rod Guide.
- 2 x Socket Head Cap Screw M2x6mm.

